



FIRE PROTECTION  
PRODUCTS

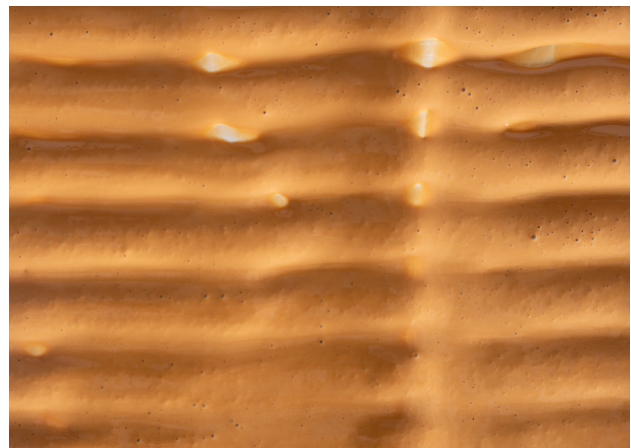


HIGH TEMPERATURE  
INSULATION



# Litaflex-Glue 800

Non-combustible adhesive for joint filling systems



## TESTS

Low flame spread-test (for shipbuilding) according to IMO Res. MSC 61(67) Annex 1, Part 5 and Annex 2; SOLAS Convention Chap. II-2 of 1974 and RINA Rules Chap. 4 of Part C.

## DESCRIPTION / APPLICATION

Adhesive for joint filling systems for fire protection. Also suitable for other temperature-resistant products made of mineral fibers, calcium silicate, etc.

## PROPERTIES

Yellowish liquid, non-flammable, free of organic solvents, spreadable consistency, miscible with water, temperature-resistant up to 800 °C. After setting, conditionally water-resistant under short-term exposure. Not suitable for continuous use in high humidity.

## APPLICATION INSTRUCTIONS

The intended substrate must be clean and free of dust, loose rust and grease. „Litaflex-Glue 800“ must be stirred thoroughly before use.  
One-sided application with brush or roller on substrate

or part to be bonded. Join and press together immediately after application. Remove excess adhesive immediately with water, as cleaning is only possible to a limited extent after curing.

Drying	5 – 10 minutes
Through-drying	6 – 8 hours
Setting	6 – 8 days
Demand	approx. 300 g/m <sup>2</sup> , depending on the nature of the substrate

## STORAGE INSTRUCTIONS

„Litaflex-Glue 800“ must be stored frost-free. Shelf life at least 12 months. Hazard class according to VbF: none (non-flammable).

**PRODUCT RANGE**

Designation	Container size	VE/Item	Item number
Litaflex-Gue 800	1,5 kg	1	114242
Litaflex-Glue 800	3,0 kg	1	114241
Litaflex-Glue 800	8,5 kg	1	114243
Litaflex-Glue 800	29,0 kg	1	114245



Information on prices and packaging units on request.

**Rex Industrie-Produkte  
Graf von Rex GmbH**  
 Großaltdorfer Straße 59  
 74541 Vellberg  
 Tel. 07907 9620-0  
 Fax 07907 9620-80  
 info@rex-industrie-produkte.de

[www.rex-industrie-produkte.de](http://www.rex-industrie-produkte.de)



The statements on specifications and data are made to the best of our knowledge. As far as possible, they have been verified by test certificates or determined by tests. In cases of doubt, we recommend carrying out a test adapted to the local conditions. Our sales and development staff are available to advise you at any time.

© All contents of this publication are protected by copyright. The copyright lies with Rex Industrie-Produkte Graf von Rex GmbH. Subject to technical changes, typesetting and printing errors as well as color deviations due to printing technology.